

# M A I N T E N A N C E



## Information on Cleaning and Maintenance of ELVAL ENF

ELVAL ENF panels or coils are factory coil coated with PVDF, FEVE or VHDPE paint Finish and should be regularly cleaned at least once per year to protect the coating and restore the surface to its original appearance. The finish should be washed gently with a mild solution of soap or mild detergent and lukewarm water (1/3 cup mild detergent per gallon of lukewarm water). Using a soft cloth or sponge, gently wash the coated surface to loosen dirt and rinse well with clean water. To minimize streaking, wash from bottom to top. An adequate rinse should be assured to cleanse the finish and also further dilute the solution. To prevent water spotting, thoroughly dry with cellulose sponge. Avoid the use of abrasive cleaners, squeegees and/or other cleaning implements that may mar or gouge the coating. ELVAL COLOUR S.A. recommends ECCA's surface cleaning recommendations or AAMA's "Voluntary Guide Specification for Cleaning and Maintenance of Painted Aluminium Extrusions and Curtain wall Panels", Publication 610.1-79 as a suitable reference.



## Instructions for ELVAL ENF cleaning

- Removal of light surface soil

An initial step recommended is the rinse cleaning with forceful water starting from the top to down the building wall. Low water volume with moderate pressure is a good practice to start with in order to dislodge excess dust, soil and fumes from the ELVAL ENF surface. Next light rubbing of the ELVAL ENF surface with soft sponges or soft rags dipped in water with a mild detergent soap should take place. The washing should be performed by applying uniform pressure, cleaning first with a horizontal motion and when finished the cleaning, the same should be repeated with a vertical motion. Follow with a thorough rinsing with clean water. This way the panel surface will be cleaned adequately and uniformly. Rundown of cleaner to the lower part of the buildings should be minimized and these areas should be kept wet and next adequately rinsed to lessen stains from the unavoidable rundown. In low elevation buildings, it is suggested to clean from bottom up and rinse from top to bottom. Always test clean small areas first to make sure that the mild soap used does not cause any problem on the ELVAL ENF surface. Keep in mind that cleaners should not be used indiscriminately. Do not use excessive and abrasive rubbing as may alter or change the surface gloss. Always rinse thoroughly with clean water after finishing with cleaning.

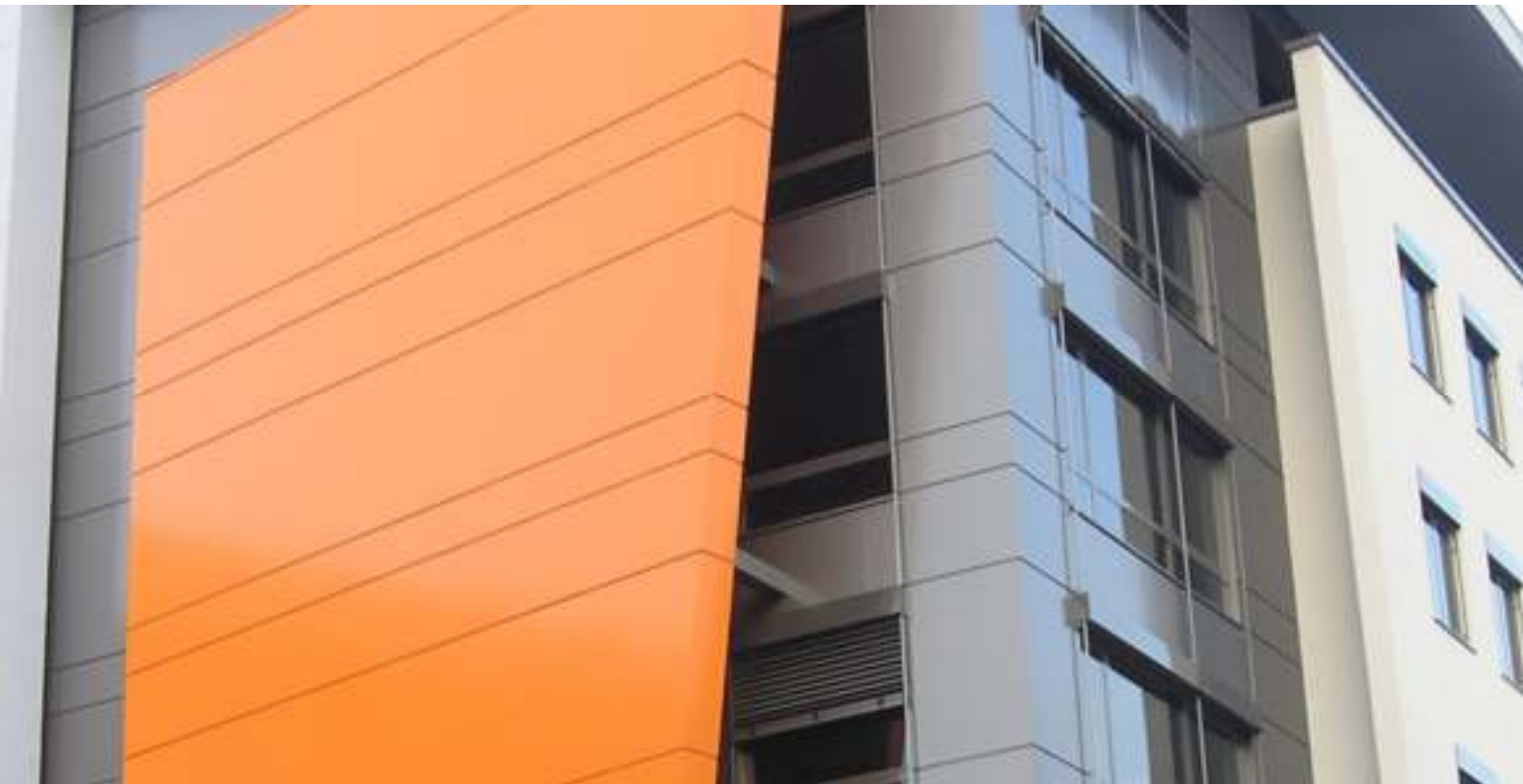


### Removal of heavy surface soil, accumulated dust and heavy fumes

In this case, some type of mild solvent such as Isopropyl alcohol, ethanol or N-hexane may be needed to remove caulking compounds, grease or sealant. Stronger solvents may be detrimental to the coated surface. To prevent any damage to the finish these solvents should be spot-tested at a small invisible area. Remaining residues should be washed with mild soap and rinsed with water. Avoid strong solvents or strong concentrations of other cleaners as they can damage the ELVAL ENF coated surface. Keep away abrasive cleaners from ELVAL ENF coated

Remove rundown soapy waters as soon as possible. Never use on ELVAL ENF coated surface any paint removers, aggressive alkali, acid or abrasive cleaners. Never use strong organic solvents on ELVAL ENF. Follow manufacturer's recommendations for diluting cleaners.

All aspects of the building work are to be maintained as per manufacturer recommendations and or available technical information. The performance of the maintenance in respect to the ELVAL ENF facades is the responsibility of the existing owner to carry out. It is also the responsibility of the building owner to ensure that any future owners are fully aware of their responsibilities in respect to carrying out the required maintenance provided in the ELVAL ENF maintenance instructions. The nature and extent of the ELVAL ENF maintenance will depend on the material or system, its geographical location, its position on the building and can include the replacement of components or parts subjected to wear.



Maintenance of building elements include but are not limited to the following.

- Follow manufacturers' maintenance recommendations
- Inspect regularly once per year and replace system components like joint sealants where required
- Test panel stability by both visual inspection for loose or corroded connections and applying pressure and suction on the panel surfaces
- Washing down surfaces regularly once per year as recommended
- Where there are elements added to the building façade at a later stage like signage, light fittings or penetrations that have not been initially considered by the supplier take note that this could affect the material itself and weather tightness. Maintenance does not include any type of upgrading of building elements to meet new aesthetics or increased environmental expectations of users.